



**DREAM YACHT
WORLDWIDE**

Base Guide

EVERYTHING YOU NEED TO KNOW TO ENJOY YOUR NEXT DREAM DESTINATION



INDIAN OCEAN | PRASLIN, SEYCHELLES

BASE ADDRESS

Praslin

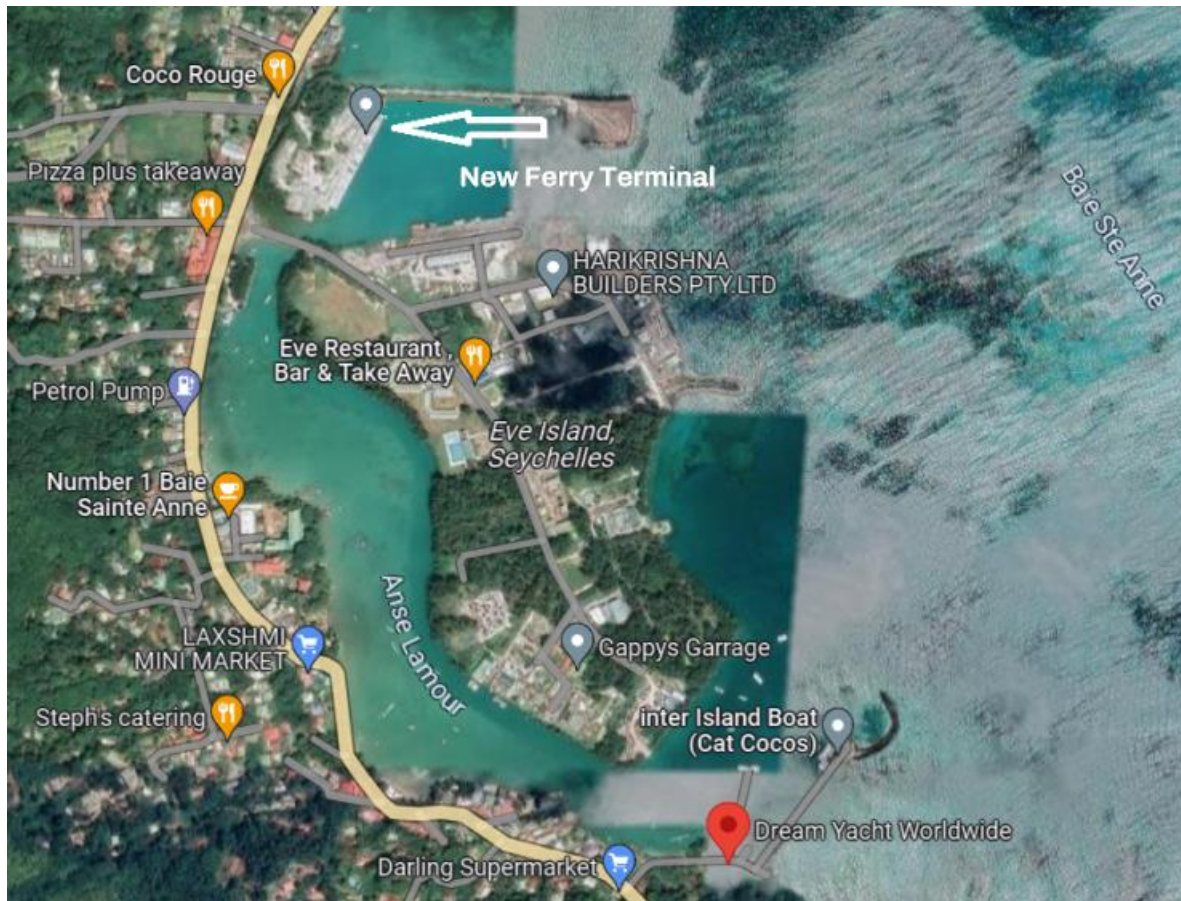
Baie Sainte Anne

Praslin 361

GPS POSITION: 4°20.800S 55°45.909E

OPENING HOURS: 8am – 6pm

BASE MAP



BASE CONTACTS

If you need support while on your charter, contact the base immediately using the contact details in this guide. Please contact your booking agent for all requests prior to your charter.

TECHNICAL MANAGER:

Joel Hernandez

Phone: +248 25 19 663

CUSTOMER SERVICE MANAGER:

Devina Bouchereau

Phone: +248 26 44 701

CHART BRIEFER

Gilbert Athanase

Phone: +248 25 77 047

COUNTRY MANAGER:

Jon Wilson

Phone: +248 25 27 662

BASE FACILITIES

Electricity

Water

Toilets

Showers

Laundry

Swimming pool

Wi-Fi

Luggage storage

Restaurant

Bar

Supermarket / Grocery store

ATM

Post Office

BASE INFORMATION

LICENSE

Sailing license required: No Yes

The Seychelles do accept practical qualifications from foreign countries, if these are translated into English.

*We do however recommend that you apply for the ICC (**International Certificate of Competence**) to avoid any issues of validity. This can usually be done with your national sailing authority.*



PAYMENT

The base can accept: Visa MasterCard Amex Cash

EMBARKATION TIME

Boarding time is 03:00pm.

YACHT BRIEFING

The chart and technical briefing take approximately one hour. All briefings are conducted on the chartered yacht and will take 40-90 minutes, depending on yacht size and crew experience

The team will give a detailed walk-through of your yacht's technical equipment, information about safe and accurate navigation, including the yacht's navigational instruments, as well as mooring, anchorage and itinerary help. The safety briefing introduces the safety equipment and your yacht's general inventory.

STOP OVERS

For all DYW charters starting and/or ending in Praslin, the first and last night at the marina is free of charge, including water, electricity and use of shower facilities.

DISEMBARKATION TIME

Disembarkation is at 9am.

The team will inspect your yacht's equipment and a general visual check of its interior and exterior. A diver will check its hull, keel, rudder(s) propeller(s) and /or bow thruster. General inspection will take approximately one hour.

BAGGAGE

Please only take soft bags and not suitcases, as they would be too cumbersome onboard.

BASE AND EMERGENCY CONTACTS

- Base emergency telephone number: +248 251 96 63
- Praslin Marina telephone number: +248 423 26 81
- Coastguard emergency telephone number: +248 429 09 00
- VHF base channel: 72
- VHF marina channel: 72
- VHF emergency channel: 16



LOCAL PHONE

It is highly recommended to buy local sim card prior to start the charter. It will be useful, for local communication, and to reach the base at any time. Local Sim card might be purchase at the base as well.

HOW TO GET THERE?

ACCESS BY PLANE

Praslin Island Airport (PRI): The airport is 16km from the base, which is a 25-minute journey by car/shuttle. There are regular flights from Mahé International Airport as well as domestic flights with Air Seychelles. Please check the schedule on the [airport website](#).

Seychelles International Airport (SEZ): The airport is a 90-minute ferry journey or 25-minute plane + taxi ride to the base. Please check the schedule on the [airport website](#).

Since the ferry terminal has moved to a new location, we strongly suggest that you book a taxi to the marina (it's a 2 minutes ride, while it might be difficult to reach the marina on foot with the luggage).

Furthermore, once you book a taxi, we advise to do the provisioning before the arrival to the marina.

TRANSFERS FROM THE AIRPORT TO OUR BASE

If you need organized transfer from the airport, please contact your aftersales team. Major car rental companies operate from the airport, please refer to airport website for info, working hours and contacts. Taxis are regularly available in front of the airport buildings.

ACCESS BY ROAD

Take the main road from the airport, head through the Mai Valley to Baie Sainte Anne.

PROVISIONING & RECOMMENDATIONS

BASE PROVISIONING SERVICE

This base provides a provisioning service: Yes No



LOCAL SUPERMARKET

Darling Supermarket
Baie St. Anne

Day	Time
Monday - Saturday	8am-8pm
Sunday	7:30am – 1pm

Opening hours may differ during public holidays and are subject to change without notice.

FUEL AND WATER

You can pay for water at the pontoon and fuel is available at the nearby gas station. You can find fuel and water at La Digue.

HOTEL SUGGESTIONS:

- **Les Lauriers**
- Côte d 'Or Praslin
- **Chalet Cote Mer**
- Baie Ste Anne, Praslin
- **Old School Self Catering**
- Baie Ste Anne, Praslin

RESTAURANT SUGGESTIONS:

- **Coco Rouge**
- **Les Rochers**
- **Les Lauriers**

AREA GUIDE

LOCAL AREA INTRODUCTION

The Seychelles offers one of the world's finest sailing grounds and is an impressive destination, with picture-perfect tropical islands, sandy beaches and imposing granite rocks polished by the relentless waves of the Indian Ocean.

Praslin is a stylish area with tempting shops, beaches and jungles to explore. The second largest island in the Seychelles, you can drive from one end to the other within an hour.

A Seychelles yacht charter offers giant palm trees, the famous coco de mer coconuts and turquoise inlets fringed with lush green takamaka plants shading fine, white sand beaches. These islands truly deserve the label, “paradise”.

To sail in the Seychelles you will need a sailing license that is recognized by the local port authorities, or you can hire a skipper.

TOP THINGS TO DO IN THE SEYCHELLES:

1. See the famous coco de mer: Head for Vallée de Mai in Baie Ste Anne, a valley protected by UNESCO with an enchanting path that winds through the enormous palm leaves of the huge coco de mer. Wherever you sail on your boat charter in the Seychelles, you can see some of the world’s most enchanting flora and fauna.
2. Sail to La Digue: La Digue is quite possibly the most beautiful island in the Seychelles. Anchor in Petite or Grande Anse, on La Digue’s southeast coast and go ashore.
3. See the nature on Cousin Island: This tiny island of just a half a mile in diameter is home to a spectacular nature reserve and bird sanctuary It’s home to rare species and is an important breeding site for Hawksbill turtles.
4. Visit the vanilla plantation: On La Digue Island you can visit the Union Estate and natural park with coconut trees, giant turtles and a vanilla plantation. Enjoy the sweet scent that is carried by the breeze around the island. Buy fresh vanilla and other local spices to take home as gifts.
5. Soak up scenic St. Pierre: Wonder at the mass of smooth rocks crowned with a clump of tall palms swaying gently in the wind while sailing in the Seychelles Islands. This is typical and superb Seychelles scenery, photographed on countless occasions and printed a million times in tourism magazines. It’s also an excellent spot for snorkeling when the waters are calm.

CURRENCY: Seychellois Rupee (SRC)

VOLTAGE: 220V

DIALING CODE: +248

CUSTOMS CLEARANCE

All travellers are required to complete Immigration procedures prior travelling to and from Seychelles. Please click [Seychelles government website](#). The entry form needs to be filled 3 days prior the departure.

For specific information about restrictions ahead of your vacation sailing Seychelles, visit the government's customs and excise [website](#). Note that 15% government tax is added to payments.

INTERNET

There are internet cafes in Mahé, Praslin and La Digue. You can buy a local sim for surfing or use some of the local Wi-Fi hotspots, which can have data restrictions.

ENVIRONMENT

- Respect your surroundings and leave only footprints in the sand
- Only use the engine or genset when needed (fill up your tanks for the water maker at the docks when you can)
- Recycle your garbage in the correct containers at the marina
- Respect regulations around marine reserves and private islands where disembarking is not permitted

REGULATIONS

Sailing at night is not permitted by the Seychelles maritime authorities and you are not allowed to fish in the marine park. Spearfishing with a spear gun is not permitted in the Seychelles. You will need to pay landing fees to enter marine national parks including mooring and swimming/snorkeling fees.

Cruises to the outer islands (Amirantes / Aldabra / North Islands group (Bird, Denis)) and out of the cruising area are forbidden except with the special written authorization of the Seychelles Government and Dream Yacht Charter Seychelles.

The authorized navigation zone is between the following GPS coordinates: 004°09S / 055°07E ; 004°09S / 056°00E ; 004°53S / 056°00E ; 004°53S / 055°07E.

Wearing camouflage and nudism/naturalism is not permitted. Topless bathing is permitted on some, but not all, beaches.

Information subject to change without notice.

THE TOURISM ENVIRONMENTAL SUSTAINABILITY LEVY

The mentioned tourism tax needs to be paid in SCR or equivalent currency *as per daily rate on base*.

To be paid locally, the price is 100 SCR per person per day.

It is not applicable to citizens and residents of Seychelles, children of 12 years and below (visitors).

SAILING CONDITIONS

SAILING AREA

While on your Seychelles yacht charter, visit the scented vanilla plantations at Union Estate on La Digue, one of the most beautiful islands in the region. Go diving at Silhouette Island or sail to Coco Island and snorkel its arborescent corals.

Enjoy bird watching at Aride Island, and the turtles at Cousin Island. There are also the larger islands of Mahé and Praslin to explore. You'll find stunning landscapes, relaxed island hopping and plenty of chances for swimming the reefs.

WEATHER

Average temperatures in the Seychelles are warm year-round, between 79°F and 82°F. The best time to visit for sailing the Seychelles is during the season transition in April/May and October/November when the water visibility is optimal at 98ft, perfect for swimming, snorkeling and diving.

TEMPERATURE

Climate in the Seychelles:

- Summer high: The May high is around 88°F
- Winter low: The January low is 75°F

WIND SYSTEMS

The sailing conditions for the Seychelles include NW winds November and March averaging eight to 12 knots for Praslin. Between April and October, the south-easterly winds blow between 10 and 20 knots, bringing cooler, windy conditions that are ideal for sailing. For Mahé, winds blow SE up to 25 knots June to October and NW between November and May.

LOCAL FORECAST

You can find the weather forecasts on the [Windguru website](#).